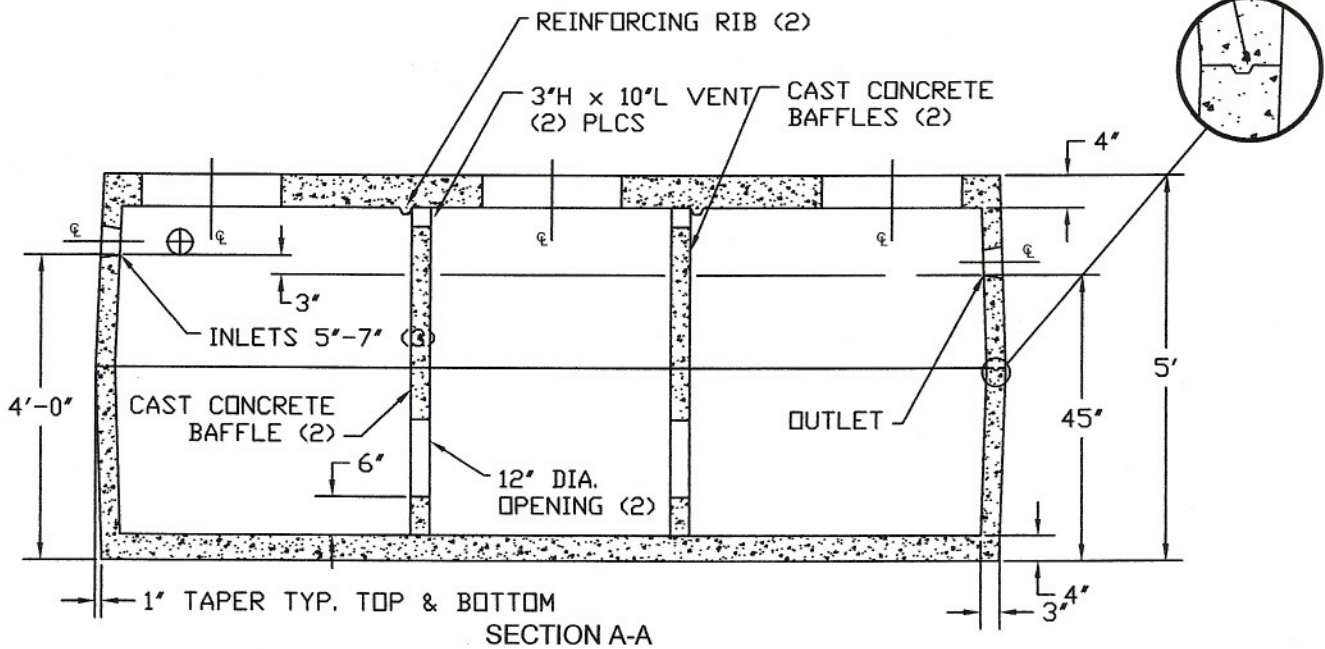


TOP VIEW

TONGUE & GROOVE JOINT WITH CS 440 SEALER



NOTES:

1. EXCAVATION MUST BE AT LEAST 12" WIDER & LONGER THAN TANK SIZE.
2. REINFORCED WITH 12.5 GA. 4" X 4" GALVANIZED WIRE & 1/2" RE-ROD.

Bush
CONCRETE PRODUCTS, INC.
 3584 Airline Road
 Muskegon Michigan 49444
 (231) 733-1904

1600 gal. 3 Compartment
 Industrial Grease Trap

SIZE	DATE	DWG NO.	REV
A	12/16/05	007	
DRAWN BY: S. GARABEDIAN		SHEET	1 of 1