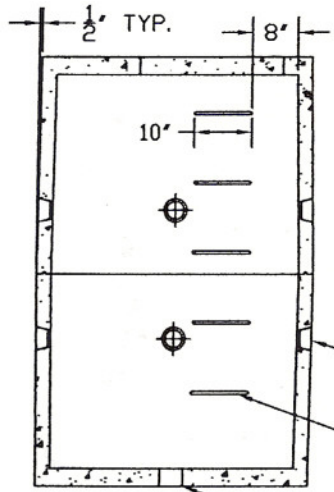


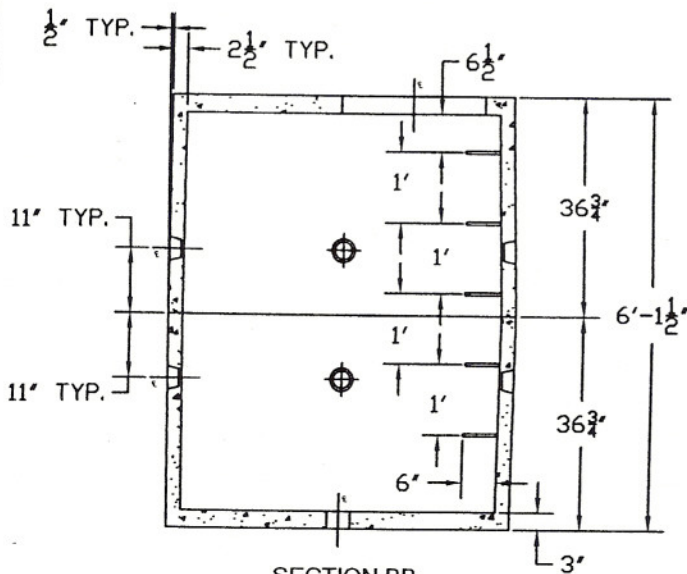
TOP VIEW



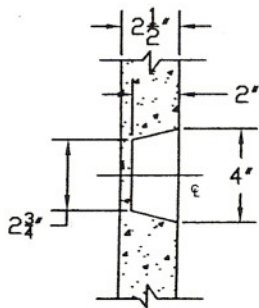
SECTION AA

4' X 3' X 2' DEEP  
KNOCK-OUTS (8) REQ'D  
AS SHOWN  
PLASTIC COVERED  
STEEL STEPS

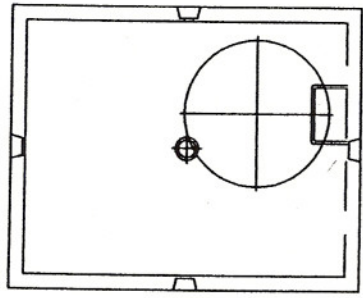
6' DIA. DRAIN OPENING



SECTION BB



SECTION THRU  
KNOCK-OUT 4X



BOTTOM VIEW

**NOTES:**

- 1.) SIDES AND ENDS REINFORCED WITH WIRE MESH.
- 2.) TOP AND BOTTOM WITH WIRE MESH PLUS 3/8" DIA. STEEL RODS.

**Bush**  
**CONCRETE PRODUCTS, INC.**  
3584 Airline Rd \* Muskegon, MI \* (231) 733-1904

**Spring Lake  
Precast Meter Pit**

SIZE A	DATE 12/27/03	DWG NO. 001	REV
DRAWN BY: S. GARABEDIAN		SHEET 1 of 1	