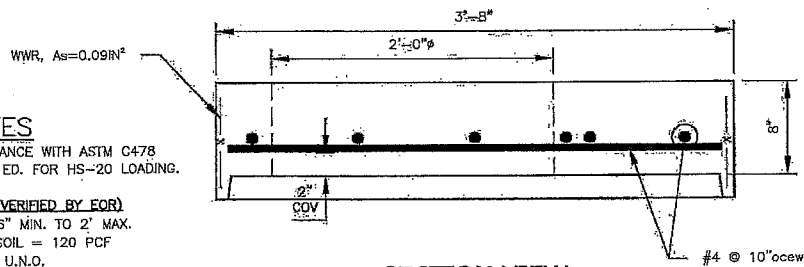


**PLAN VIEW**



**SECTION VIEW**

**DESIGN NOTES**

1. DESIGN IN ACCORDANCE WITH ASTM C478 FOR AASHTO 17TH ED. FOR HS-20 LOADING.

**ASSUMPTIONS: (TO BE VERIFIED BY EOR)**

1. EARTH COVER = 6" MIN. TO 2' MAX.
2. UNIT WEIGHT OF SOIL = 120 PCF
3. BAR COVER = 2" U.N.O.
4. f'c @ 28 DAYS = 4,000 PSI
5. REINFORCEMENT BAR PER ASTM A615, GRADE 60; WWR PER ASTM A185; GRADE 65

**GENERAL NOTES:**

1. PROVIDE ADDITIONAL REINFORCING AROUND OPENINGS EQUAL TO THE BARS INTERRUPTED, HALF EACH SIDE. ADDITIONAL BARS TO BE IN THE SAME PLANE.
2. TRIM OPENINGS WITH DIAGONAL #4 BARS, EXTEND BARS MINIMUM 12" BEYOND OPENINGS, BEND BARS AS REQUIRED TO MAINTAIN BAR COVER.
3. SEE MONOLITHIC BASE SECTION FOR MAXIMUM PLACEMENT DEPTH.
4. BUOYANCY TO BE CHECKED ON A SITE BY SITE BASIS.
5. DESIGN IS BASED ON THE CRITERIA STATED HEREIN AND SHOULD BE REVIEWED BY A QUALIFIED ENGINEER FOR SPECIFIC SITE APPLICATIONS.



**36" DIA. MANHOLE  
FLAT COVER**

SIZE <b>A</b>	DATE <b>01/31/2014</b>	DWG NO. <b>027</b>	REV
DRAWN BY: <b>S. GARABEDIAN</b>		SHEET <b>1 of 1</b>	