

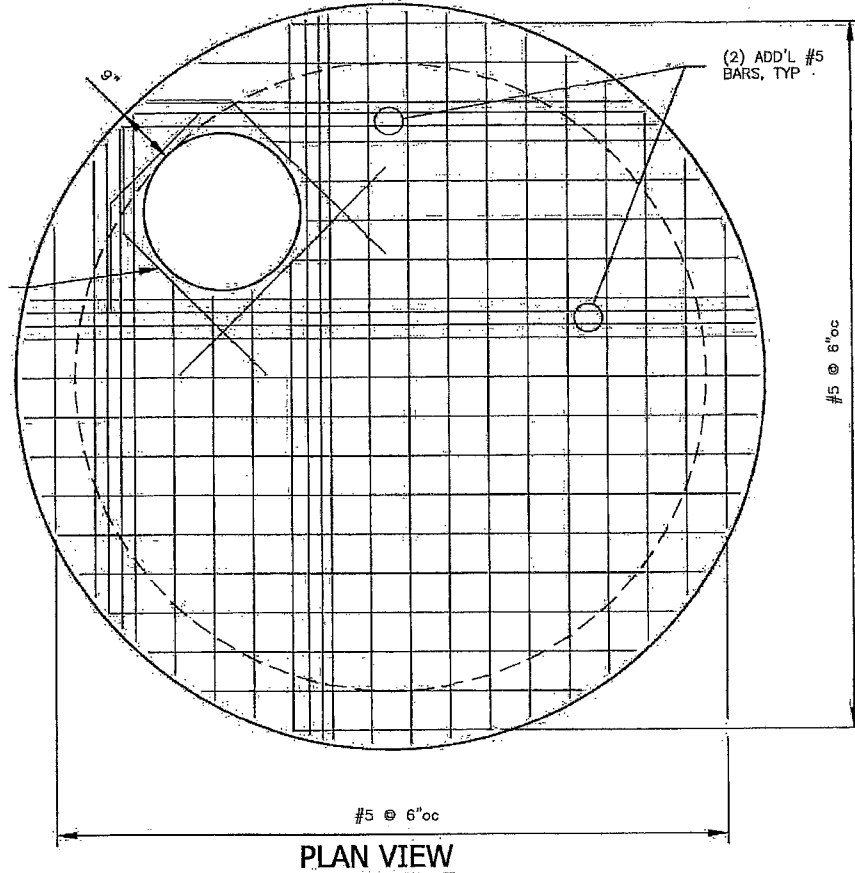
DESIGN NOTES

- DESIGN IN ACCORDANCE WITH ASTM C478 FOR AASHTO 17TH ED. FOR HS-20 LOADING.

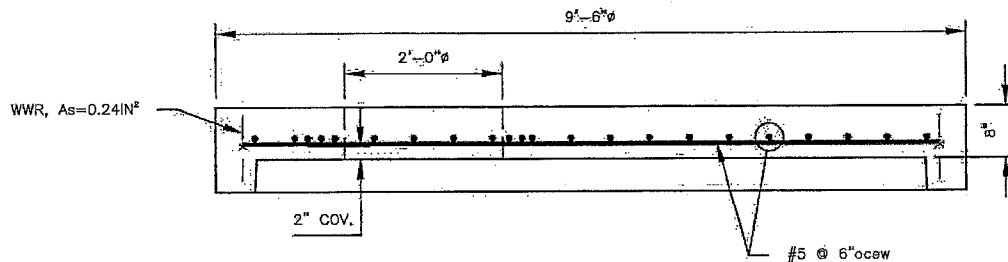
ASSUMPTIONS: (TO BE VERIFIED BY EOR)

- EARTH COVER = 6" MIN. TO 2' MAX.
- UNIT WEIGHT OF SOIL = 120 PCF
- BAR COVER = 2" U.N.O.
- f'_c @ 28 DAYS = 4,000 PSI
- REINFORCEMENT BAR PER ASTM A615, GRADE 60; WWR PER ASTM A185, GRADE 65

#4 DIAGONAL TRIM BARS AROUND OPENING, TYP



PLAN VIEW



SECTION VIEW

GENERAL NOTES:

- PROVIDE ADDITIONAL REINFORCING AROUND OPENINGS EQUAL TO THE BARS INTERRUPTED, HALF EACH SIDE. ADDITIONAL BARS TO BE IN THE SAME PLANE.
- TRIM OPENINGS WITH DIAGONAL #4 BARS, EXTEND BARS MINIMUM 12" BEYOND OPENINGS, BEND BARS AS REQUIRED TO MAINTAIN BAR COVER.
- SEE MONOLITHIC BASE SECTION FOR MAXIMUM PLACEMENT DEPTH.
- BUOYANCY TO BE CHECKED ON A SITE BY SITE BASIS.
- DESIGN IS BASED ON THE CRITERIA STATED HEREIN AND SHOULD BE REVIEWED BY A QUALIFIED ENGINEER FOR SPECIFIC SITE APPLICATIONS.

Bush
CONCRETE PRODUCTS, INC.

3584 Airline Road Muskegon, Michigan 49444
 231-733-1904 1-800-TOO-BUSH
 WWW.BUSHCONCRETEPRODUCTS.COM

**96" DIA. MANHOLE
 FLAT TOP**

| SIZE | DATE | DWG NO. | REV |
|-------------------------|------------|---------|--------------|
| A | 01/31/2014 | 023 | |
| DRAWN BY: S. GARABEDIAN | | | SHEET 1 of 1 |